



The best support for great results

SOS PNEUS

- Indispensable. Essential resource in the logistics of support to moto-mechanization;
- Agility in field/work interfaces with tire repair and warehouse;
- Functional. Packages and transports tires, supplies compressed air for calibration and water for tire regulation.

The most effective and helpful equipment in logistics of supply and assistance to tires in moto-mechanized fronts.



TECHNICAL CATALOGUE



Download a QR Code on your smartphone, read the code below and learn more



Register in www.gascom.com.br and receive our newsletters.

SOS PNEUS IN ACTION



BASIC COMPONENTS



GREAT RESULTS IN THE SECTORS



Sugarcane



Infrastructure








Agricultural



Forestry

FUNCTIONS

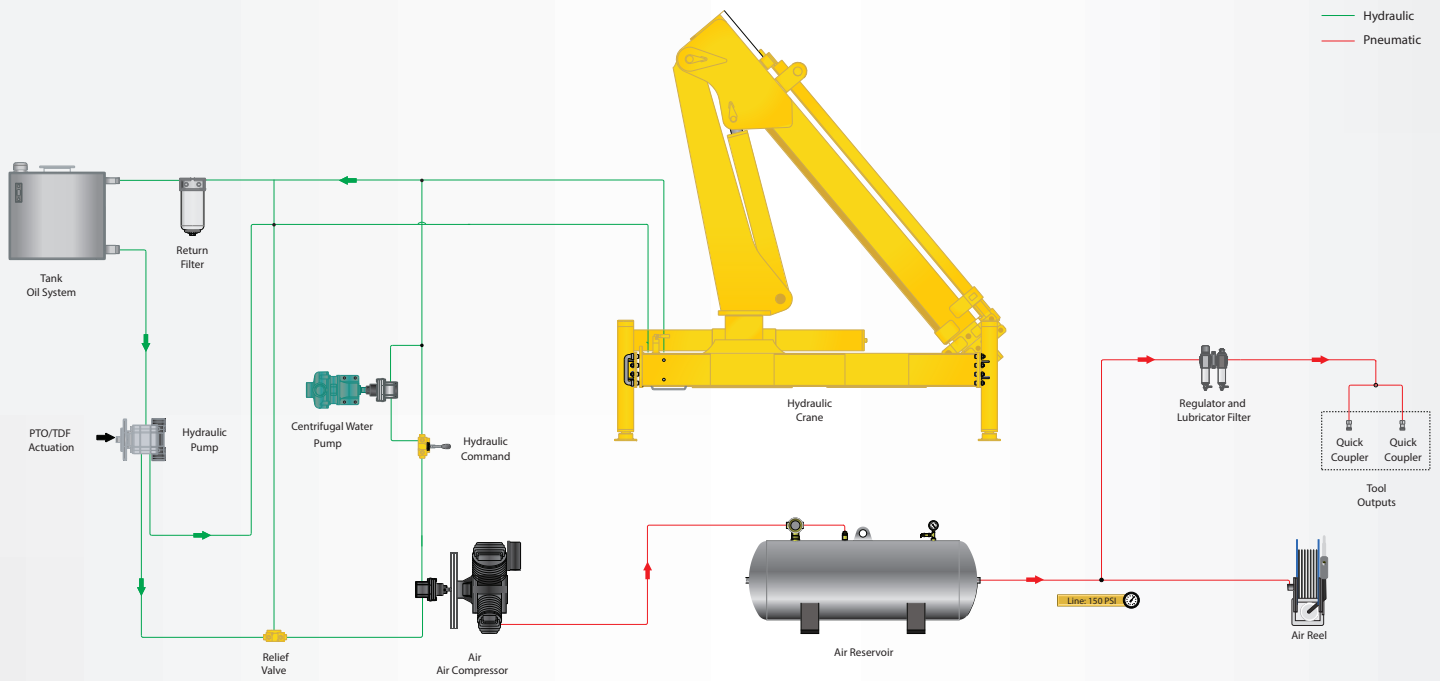
BASIC

-  Load and unload of tires in field-repair-warehouse interfaces.
-  Packages and transports tires safely, practically and rationally.
-  Packages, transports and supplies water for regulating tires.
-  Tire filling and balancing.
-  Generates and supplies compressed air for pneumatic tools.

ADDITIONAL

- Supplies pressurized water (pumped) to:
- Wash maintenance points in machines (with basic pump).
 - Wash the machine (optional pump).

HYDRAULIC AND PNEUMATIC SYSTEM



MORE INFORMATION

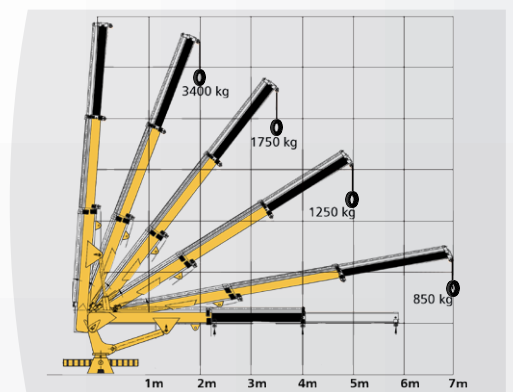


AIR COMPRESSOR
30 PCM X 175 PSI with hydraulic actuation and 200 L lung reservoir.



CENTRIFUGAL WATER PUMP
100L/min. flow, 50 PSI pressure with retractable reel with \varnothing 1/2" x 15 m hose.

PERFORMANCE CRANE (INDICATION)



Av. Marginal Sérgio Cancian 5293
Phone: +55 16 2105 3622
CEP [ZIP code]: 14176 503 - Sertãozinho SP
comercial@gascom.com.br | www.gascom.com.br



The best support for great results